

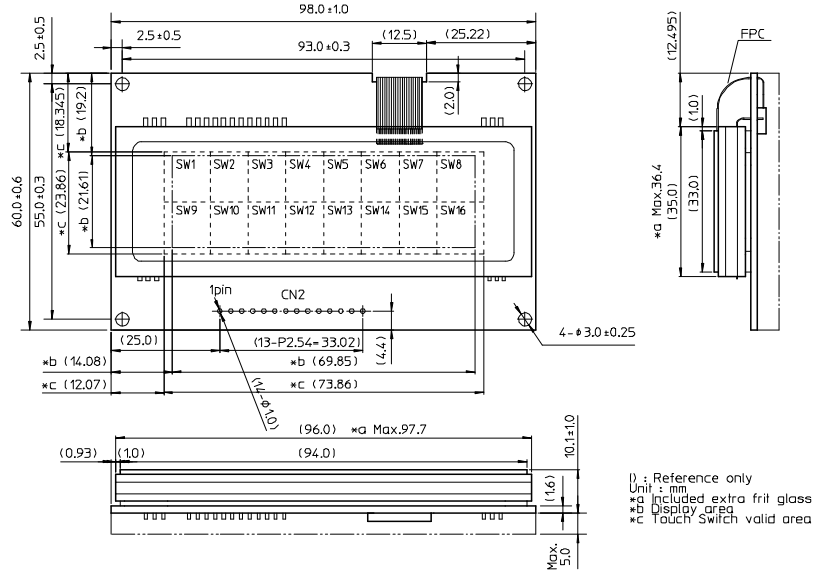
GU140X32F-D903S

SIMPLIFIED DATASHEET

Features

VF Display Module equips
16 (8x2) Capacitive
Touch Switches.

Outline dimensions



Get full specification
[Click here to go to request form.](#)

Specification

Electrical Ratings Note: Interface is 3.3V C-MOS level.

Parameter	Symbol	Min.	Typ.	Max.	Unit	Condition
Power Supply Voltage	VCC	4.75	5.00	5.25	VDC	

Electrical Characteristic Please refer to a full specification for Characteristics of I/O ort.

Parameter	Symbol	Min.	Typ.	Max.	Unit	Condition
I2C Logic Input Current	I _{IH-1}	-	-	1.0	uADC	V _{IN} =3.3V
SDA,SCL,/RESET	I _{IL-1}	-	-	-0.5	mADC	V _{IN} =0V
I2C Logic Input Voltage	V _{IH-1}	2.5	-	-	VDC	-
SDA,SCL,/RESET	V _{IL-1}	-	-	0.6	VDC	-
I2C Logic Output Voltage S	V _{OL-1}	-	-	0.5	VDC	I _{OL} =0.5mA
I2C Logic Output Voltage	V _{OH-2}	2.6	-	-	VDC	I _{OH} =-0.5mA
MBUSY,/TRDY	V _{OL-2}	-	-	0.5	VDC	I _{OL} =0.5mA
Logic Input Current RxD	I _{IH-2}	-	-	1.0	uADC	V _{IN} =3.3V
MOSI,SCK,/CS,HBUSY,/RESET	I _{IL-2}	-	-	-0.5	mADC	V _{IN} =0V
Logic Input Voltage RxD	V _{IH-2}	2.5	-	-	VDC	-
MOSI,SCK,/CS,HBUSY,/RESET	V _{IL-2}	-	-	0.6	VDC	-
Logic Output Voltage	V _{OH-3}	2.6	-	-	VDC	I _{OH} =-0.5mA
TXD,MISO,MBUSY,/TRDY	V _{OL-3}	-	-	0.5	VDC	I _{OL} =0.5mA
Power Supply Current	ICC-1	-	340	440	mADC	All dots turned on
	ICC-2	-	230	300	mADC	All dots turned off
	ICC-3	-	12	15	mADC	Display power off
Power consumption		-	1.7	2.2	W	All dots turned on

Optical characteristics

Parameters	
Luminance	300 cd/m ² Min. (600 cd/m ² Typ.)
Color of illumination	Green (Bluish green)

Physical Specification

Parameters	
Number of Dots	4,480 (140 x 32)
Active area (XxY)	69.85 mm x 21.61 mm
Size of Dot (XxY)	0.35 mm x 0.53 mm
Pitch of Dot (XxY)	0.50 mm x 0.68 mm
Weight	approximately 68 g

Environmental Specification

Parameters	
Operating Temperature	-40 ~ +85°C
Storage Temperature	-40 ~ +85°C
Operating Humidity	20 ~ 80% R.H. (non-condensing)
Storage Humidity	20 ~ 80% R.H. (non-condensing)
Vibration (non-operating)	10-55-10Hz, all amplitude 1mm, 30 minutes, X-Y-Z
Shock (non-operating)	392m/s ² (40G) 9ms X-Y-Z, 3 times each direction

Interface
Asynchronous Serial, SPI and I2C (Logic level is 3.3V for all)

Pin Assignment
CN2: Asynchronous Serial

Pin No.	Signal	Pin No.	Signal
1	VCC	8	TXD
2	RXD	9	/TRDY
3	GND	10	GND
4	MBUSY	11	P00
5	IC	12	P01
6	/RESET	13	P02
7	HBUSY	14	P03

CN2: SPI Interface

Pin No.	Signal	Pin No.	Signal
1	VCC	8	MISO
2	MOSI	9	/TRDY
3	GND	10	GND
4	MBUSY	11	P00
5	SCK	12	P01
6	/RESET	13	P02
7	/CS	14	P03

CN2: I2C Interface

Pin No.	Signal	Pin No.	Signal
1	VCC	8	IC
2	SDA	9	/TRDY
3	GND	10	GND
4	MBUSY	11	P00
5	SCL	12	P01
6	/RESET	13	P02
7	IC	14	P03

Character Fonts

Parameters	
Font tables	5 x 7 Alpha-numeric, Kana, International
	8 x 16 Alpha-numeric, Kana, International
	16 x 16 CJK
Number of digits & lin	5x7 dot font: 18/21digits x 4 lines
	16x16 dot font: 8digits x 1line

Functions
Characters and Graphics display, Control command, Macro & P Macro, I/O port, Touch Switch with Calibration, etc.

